

THE OUTDOORSCENE™

Luxury Outdoor
Kitchens

Find Us Here

Goatstown Cross, Goatstown, Dublin 14
01 2960212
sales@outdoor.ie
www.outdoor.ie

Live the Alfresco
life with
The Outdoor
Scene

TABLE OF CONTENTS

01	ABOUT US.....
02	FRESCOPRO OUTDOOR KITCHENS.....
02	FRESCOPRO INTRODUCTION
03	THE CHOICE IS YOURS
04	CANBERRA
05	ESPERANCE
06	AUGUSTA
07	BORONIA
08	FREMANTLE
09	BEEFEATER HARMONY SIGNATURE OUTDOOR KITCHENS.....
10	BEEFEATER INTRODUCTION
11	THE CHOICE IS YOURS
12	HARMONY SIGNATURE 4 BURNER KITCHENS
13	HARMONY SIGNATURE 5 BURNER KITCHENS
14	HARMONY PROLINE 6 BURNER KITCHENS
15	CABINEX OUTDOOR KITCHENS.....
16	CABINEX INTRODUCTION
17	BEEFEATER 3000 SERIES 4 BURNER BBQ KITCHENS
18	BEEFEATER 3000 SERIES 5 BURNER BBQ KITCHENS
19	BEEFEATER PROLINE ROASTER 6 BURNER KITCHENS
20	KEY FEATURES
21	EO OUTDOOR KITCHENS.....
22	ABOUT EO KITCHENS
23	A SOLID FRAMEWORK
24	PREMIUM MATERIALS TO CHOOSE FROM
27	CONFIGURATION EXAMPLES
30	SUGGESTED APPLIANCES FOR YOUR KITCHEN
32	BURNOUT OUTDOOR KITCHENS.....
33	ABOUT BURNOUT KITCHENS
34	WHAT YOU GET WITH A BURNOUT KITCHEN
36	CONFIGURATION EXAMPLES
37	BURNOUT KITCHEN MATERIALS
39	NOTES.....

Outdoor Kitchens

The Outdoor Scene is proud to offer a range of different built in barbecue models and kitchen components for you to choose from to help create the outdoor kitchen of your dreams. We offer a diverse range of options for your kitchen that you can explore. Each package includes drawers, counters and a built-in Beefeater barbecue. Enhance your outdoor living space and surprise your guests with an outdoor kitchen!

The Outdoor Scene will assist you from the very beginning to design your ideal outdoor kitchen. After conducting a site survey and placing the order, expert builders from The Outdoor Scene will install your brand new outdoor kitchen with whatever customization you desire. We are also proud to partner with exceptional garden designers who can help take your outdoor space to the next level. When helping you build your dream outdoor kitchen, we aim to help you build the best kitchen within your scope!

About Us

The Outdoor Scene is Ireland's favourite retailer for high quality Garden Furniture, Outdoor Lighting, Barbeques and beyond. The Outdoor Scene has everything you need to make your outdoor entertaining area fantastic.

FRESCOPRO

TASTE LIFE OUTDOORS

What you're getting when you choose FrescoPro

Whether it is a patio, suburban terrace or rural mansion you can have an outdoor kitchen that you will be proud of for many years to come. The Outdoor Scene is proud to use the highest quality, polished and most durable outdoor kitchen builds in the world. We offer a range of kitchen storage options, cabinet finishes and worktops to create your dream luxury outdoor kitchen.

With FrescoPro, the revolutionary framing systems allow us to install a great outdoor kitchen quickly and easily. Faster, cleaner and free of the complexities and hassles of traditional joinery or brick and block construction methods.

All FrescoPro packages use their patented aluminium framing system with no welding, cutting or bending required. Once assembled, the modules are plum square and level every time. All of the frames are backed with a 25 Year Anti-corrosion Guarantee.

No footings required as the adjustable feet allow for a fall in your chosen location. You'll need a hard standing to allow easy installation of doors, drawers, sinks, appliances, wiring and plumbing if required.

FrescoPro structures are designed to hold hundreds of kilos of stone and appliances. Their inherent strength and durability give structural integrity in all environments ensuring they'll stand the test of time.



The framing system is designed with Aluminium side walls and shelves giving you a perfect storage space for all the kit you'll be using with your kitchen. Strong, durable and stylish as you'd expect from FrescoPro.

In addition to the packages put together in this brochure, we are pleased to assist you with any configuration you want. Make your outdoor kitchen your own by choosing from the array of door skins, worktops, layouts, barbeques and extras that FrescoPro has to offer.

5 EASY STEPS TO MAKING IT YOUR OWN

1. Select the kitchen style and dimension that appeals to you.
2. Choose the barbecue model that you prefer in your new outdoor kitchen.
3. Select from a choice of worktop materials and colours.
4. Select from a choice of door skin materials and colours.
5. Email or call us with your list and we'll be happy to take care of your requirements by confirming the suitability of your configuration.

DOOR SKINS

Classic Aluminium Composite



Black



Anthracite

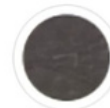


Silver

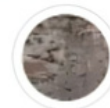


White

Premium Dekton



Laos



Trillium



Sirius



Sirocco

Classic Granite



Nero Absoluto



Steel Grey

Premium Dekton



Sirius



Sirocco

CHOICE OF BARBEQUES



BeefEater Signature™ 3000E
4 Burner Barbecue



BeefEater 1600S Series
4 Burner Barbeque



BeefEater Proline™ Roasting Hood
6 Burner Barbecue



BeefEater Signature™ 3000E
5 Burner Barbecue



BeefEater 1600S Series
5 Burner Barbeque



BeefEater Proline™ Roasting Hood
6 Burner Barbecue



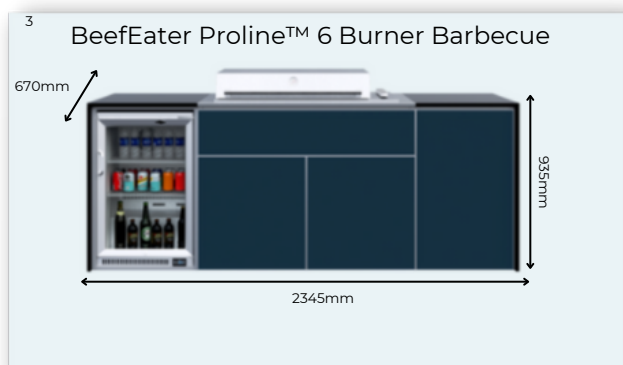
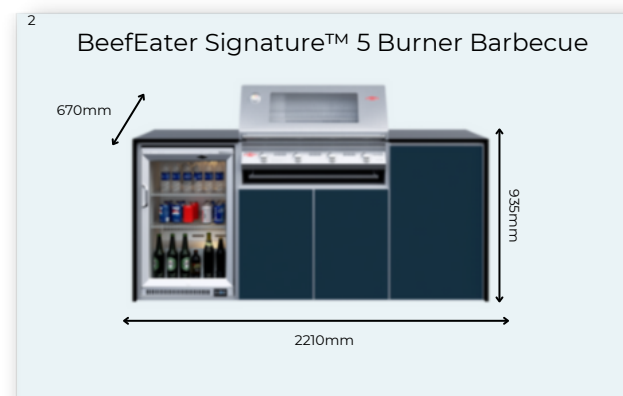
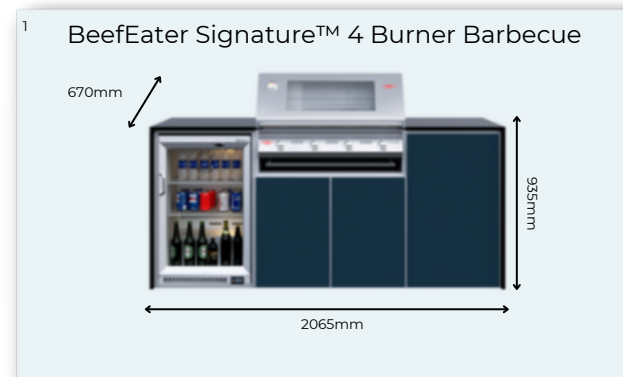
The Canberra is ideal where space is at a minimum or if you are simply looking for a compact and stylish outdoor kitchen look. Featuring the essential barbecue, fridge and workspace you need, this is a fantastic package and comes with plenty of storage space for your essentials.

Dimensions:

1. BeefEater Signature 4 Burner: 2065mm L x 935mm H x 670mm D
2. BeefEater Signature 5 Burner: 2210mm L x 935mm H x 670mm D
3. BeefEater Proline 6 Burner: 2345mm L x 935mm H x 670mm D

What you will find in your Canberra kitchen:

- Multiple choices of door skins and worktops
- Aluminium Framing System
- Single fridge
- Extruded aluminium door frames with soft close feature
- 20mm Solid Granite or Dekton Worktop and Waterfall End Panels
- Rear Panel Cladding





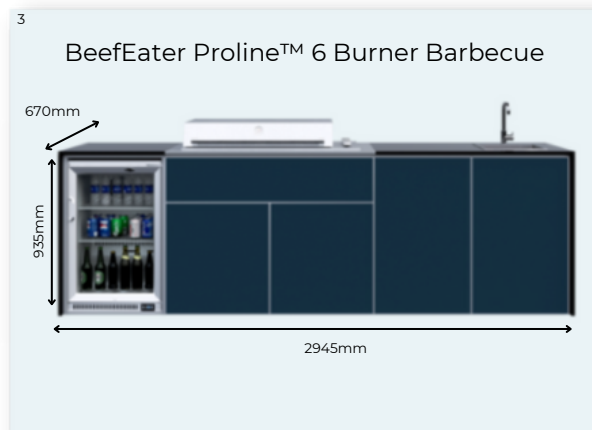
The Esperance package features the full kitchen suite. Beautifully proportioned and with generous workspace, this configuration brings you all the benefits of Canberra but adds the kitchen sink and our specially sourced single lever tap.

Dimensions:

1. BeefEater Signature 4 Burner: 2665mm L x 935mm H X 670mm D
2. BeefEater Signature 5 Burner: 2810mm L x 935mm H X 670mm D
3. BeefEater Proline 6 Burner: 2945mm L x 935mm H X 670mm D

What you will find in your Esperance kitchen:

- Multiple choices of door skins and worktops
- Aluminium Framing System
- Single fridge
- Sink & tap
- Extruded aluminium door frames with soft close feature
- 20mm Solid Granite or Dekton Worktop and Waterfall End Panels
- Rear Panel Cladding





When the gatherings get large and the need for workspace is paramount you could do far worse than specify the Augusta package. Masses of worktop combined with your kitchen essentials and a double door 190 litre fridge to keep the guests well refreshed!

Dimensions:

1. BeefEater Signature 4 Burner: 2975mm L x 935mm H X 670mm D
2. BeefEater Signature 5 Burner: 3120mm L x 935mm H X 670mm D
3. BeefEater Proline 6 Burner: 3255mm L x 935mm H X 670mm D

What you will find in your Augusta kitchen:

- Multiple choices of door skins and worktops
- Aluminium Framing System
- Double fridge
- Sink & tap
- Extruded aluminium door frames with soft close feature
- 20mm Solid Granite or Dekton Worktop and Waterfall End Panels
- Rear Panel Cladding

1 BeefEater Signature™ 4 Burner Barbecue



2 BeefEater Signature™ 5 Burner Barbecue



3 BeefEater Proline™ 6 Burner Barbecue





Where space is no object and size really matters, you need look no further than Boronia. Lots of storage space, worktop and all the trimmings make this FrescoPro package a majestic centrepiece to grace any outdoor space.

Dimensions:

1. BeefEater Signature 4 Burner: 3210mm L x 935mm H X 670mm D
2. BeefEater Signature 5 Burner: 3355mm L x 935mm H X 670mm D
3. BeefEater Proline 6 Burner: 3490mm L x 935mm H X 670mm D

What you will find in your Boronia kitchen:

- Multiple choices of door skins and worktops
- Aluminium Framing System
- Single fridge
- Sink & tap
- Extruded aluminium door frames with soft close feature
- 20mm Solid Granite or Dekton Worktop and Waterfall End Panels
- Rear Panel Cladding

1 BeefEater Signature™ 4 Burner Barbecue



2 BeefEater Signature™ 5 Burner Barbecue



3 BeefEater Proline™ 6 Burner Barbecue





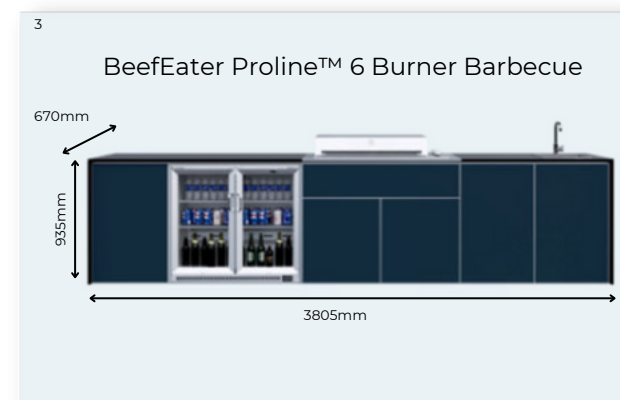
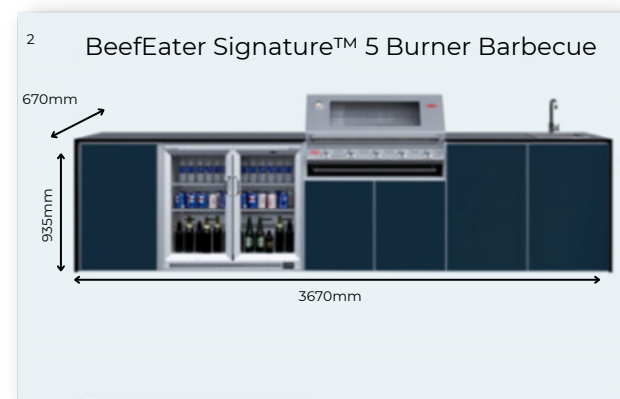
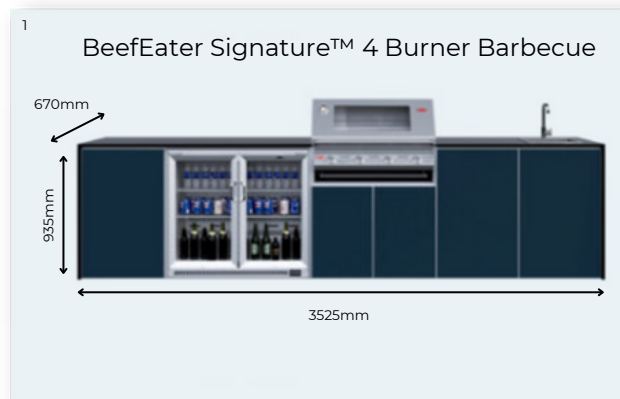
For the ultimate outdoor kitchen, we recommend the Fremantle. Double fridge, triple cabinet, barbecue of your choice and, of course, the kitchen sink. Measuring up to 3.8 metres, this configuration is a timeless and beautiful showstopper.

Dimensions:

1. BeefEater Signature 4 Burner: 3525mm L x 935mm H X 670mm D
2. BeefEater Signature 5 Burner: 3670mm L x 935mm H X 670mm D
3. BeefEater Proline 6 Burner: 3805mm L x 935mm H X 670mm D

What you will find in your Fremantle kitchen:

- Multiple choices of door skins and worktops
- Aluminium Framing System
- Double fridge
- Sink & tap
- Extruded aluminium door frames with soft close feature
- 20mm Solid Granite or Dekton Worktop and Waterfall End Panels
- Rear Panel Cladding



THE OUTDOORSCENE™



BEEFEATER HARMONY



Here at The Outdoor Scene, we not only supply beautiful and durable outdoor kitchen furniture, but also outdoor kitchen hardware. We offer Beefeater built in barbecues, side burners, stainless steel doors, drawers and bar centres. We also recommend Beefeater outdoor refrigerators which will allow you to keep the meat & drinks cool outdoors.

LUXURY OUTDOOR LIVING

This is next level luxury living. BeefEater's alfresco kitchen range is purpose-built to create the ultimate outdoor space.

Every detail and feature is designed to fit perfectly into the space you have in mind. Featuring quartz benchtops and storage doors, practical deep and wide drawers and quality fittings. Choose from one of our preselected options to help you design the perfect outdoor BBQ space to create unforgettable food and beautiful memories.

SIGNATURE

Our Signature® barbecues offer the ultimate barbecuing experience with powerful four and five burner options available. Designed to suit your home and lifestyle, these magnificent barbecues are packed with state-of-the-art features to make entertaining easy.

PROLINE

With a sleek linear design and uncompromising power, our ProLine® Series integrated barbecues offers an array of premium features like the multipurpose cast iron furnishings, powerful side burner, and a superior oil management system. It's everything you want in a barbecue and more.

THE CHOICE IS YOURS

CHOICE OF BARBEQUES

7000 Classic 4 Burner



7000 Premium 4 Burner



7000 Classic 5 Burner



7000 Premium 5 Burner



7000 RANGE
NOW AVAILABLE:

1600S Series 4 Burner



Discovery
® 1200S 4 Burner



Discovery
® 1200E 4 Burner



Signature® 3000E 5 Burner



1600S Series 5 Burner



Discovery
® 1200S 5 Burner



Discovery
® 1200E 5 Burner



CHOICE OF BARBEQUES FOR THE PROLINE RANGE



ProLine® 6 Burner with Roasting Hood



ProLine® 6 Burner with Removable Flatlid

HARMONY SIGNATURE 4 BURNER KITCHENS

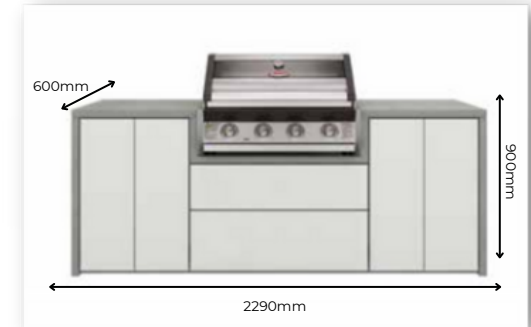


Not only do they look great but they are easy to clean. High heat tested to withstand 150 degrees without scorching or cracking. They are carefully constructed with durable marine grade ply cabinets and German Blum hinges.

Dimensions:

- Image 1. Harmony Signature ODK 4 Bnr Standard Pack: 2290mm L x 900mm H x 600mm D
- Image 2. Harmony Signature ODK 4 Bnr SingleFridge Pack: 2290mm L x 900mm H x 600mm D
- Image 3. Harmony Signature ODK 4 Bnr Double Fridge Pack: 2560mm L x 900mm H x 600mm D
- Image 4. Harmony Signature ODK 4 Bnr Double Fridge with Sink & Tap Pack: 2870mm L x 900mm H x 600mm D

1 Harmony Signature ODK 4 Bnr Standard Pack



2 Harmony Signature ODK 4 Bnr Single Fridge Pack



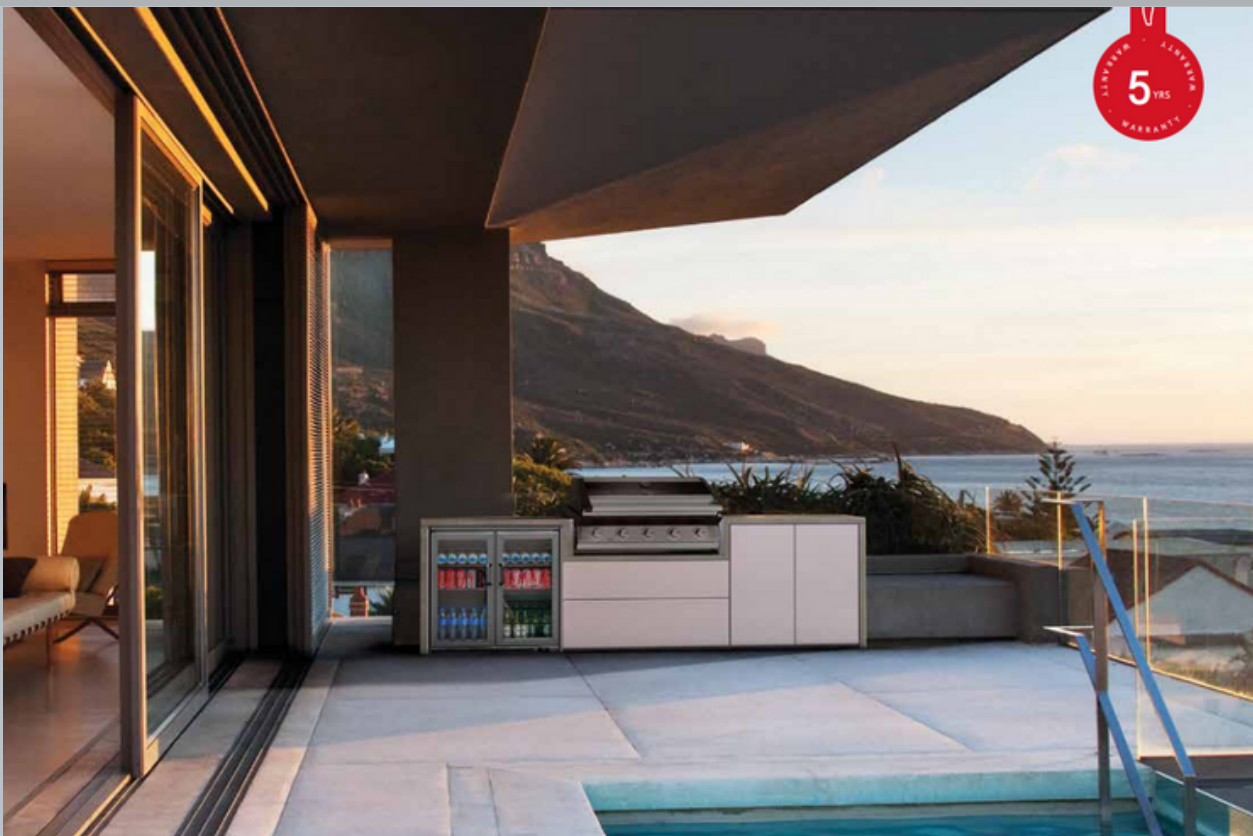
3 Harmony Signature ODK 4 Bnr Double Fridge Pack



4 Harmony Signature ODK 4 Bnr Double Fridge with Sink and Tap Pack



HARMONY SIGNATURE 5 BURNER KITCHENS



Not only do they look great but they are easy to clean. High heat tested to withstand 150 degrees without scorching or cracking. They are carefully constructed with durable marine grade ply cabinets and German Blum hinges.

Dimensions:

- Image 1. Harmony Signature ODK 5 Bnr Standard Pack: 2468mm L x 900mm H x 600mm D
- Image 2. Harmony Signature ODK 5 Bnr Double Fridge Pack: 3110mm L x 900mm H x 600mm D
- Image 3 & 4. Harmony Signature ODK 5 Bnr Double Fridge with Sink and Tap Pack: 3600mm L x 900mm H x 600mm D

1 Harmony Signature ODK 5 Bnr Standard Pack



2 Harmony Signature ODK 5 Bnr Double Fridge Pack



3 Harmony Signature ODK 5 Bnr Double Fridge with Sink and Tap Pack



HARMONY PROLINE 6 BURNER KITCHENS



The ultimate in outdoor kitchen style with the elegant Proline® 6 burner barbecue and quad burner.
Clean design lines and 40mm Quartz stone work tops for the top of the range kitchen.

Dimensions:

- Image 1. Harmony Proline ODK 6 Bnr S/Bnr Pack: 1900mm L x 900mm H x 700mm D
- Image 2. Harmony Proline ODK 6 Bnr, S/Bnr & Double Fridge Pack: 3305mm L x 900mm H x 700mm D

1 Harmony Proline ODK 6 Bnr S/Bnr Pack



2 Harmony Proline ODK 6 Bnr, S/Bnr & Double Fridge Pack



THE OUTDOORSCENE™

CABINEX





10 YEAR STRUCTURAL WARRANTY

Cabinex™ at its option will replace or repair the PVC panels, bench tops, hinges and handles, plastic feet, kickers, vents and aluminium frame that fail structurally, or fail due to material defects within the 10 years from date of purchase.



Welcome to Cabinex™ outdoor kitchens. Beauty & functionality rolled into one. Market leading appliances, premium materials and award winning services are brought together to make your Outdoor BBQ Kitchen everything you've ever wanted.

Aluminium Frame

The Cabinex™ aluminium framing system provides the structure of our outdoor kitchens. Technology and design are combined to offer a patented cabinetry system that is a pioneer in its class. PVC panels, combined with Cabinex™ patented aluminium components form a rigid and robust cabinetry solution. Making it almost 4 times easier to construct than traditional cabinetry.



Cabinex™ is pleased to partner with BeefEater as a quality companion brand. Depending on your space and budget, choose between the 4 burner, 5 Burner or Proline model, either can be connected to LPG or Natural gas.

BEEFEATER 3000 SERIES 4 BURNER



The Cabinex™ 4 Burner BBQ Outdoor Kitchen features the BeefEater 4 Burner BBQ, together with a sink module, storage module and fridge module with a single door bar fridge.

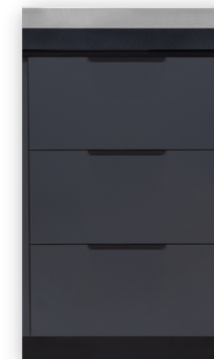
Total measurements for this kitchen:

Standard: 2655mm W x 670mm D x 570mmH (without BBQ)

Premium: 3220mm W x 670mm D x 570mmH (without BBQ)

The Premium Kitchen contains extra storage space of 3 drawers

Make your outdoor kitchen Premium by adding extra storage space



BEEFEATER 3000 SERIES 5 BURNER



The Cabinex™ 5 Burner BBQ Outdoor Kitchen features the BeefEater 5 Burner BBQ, together with a sink module, storage module and fridge module with a single door bar fridge.

Total measurements for this kitchen:

Standard: 2815mm W x 670mm D x 570mmH (without BBQ)

Premium: 3380mm W x 670mm D x 570mmH (without BBQ)

The Premium Kitchen contains extra storage space of 3 drawers

Make your outdoor kitchen Premium by adding extra storage space



BEEFEATER PROLINE ROASTER BURNER



The Cabinex™ 6 Burner BBQ Outdoor Kitchen features the BeefEater 6 Burner Proline Roaster BBQ, together with a sink module, storage module and fridge module with a single door bar fridge.

Total measurements for this kitchen:

Image 1: Standard: 2935mm W x 670mm D x 570mm H (without BBQ)

Image 2: Premium: 3500mm W x 670mm D x 570mm H (without BBQ)

The Premium Kitchen contains extra storage space of 3 drawers



KEY FEATURES



118L Bar Fridge

A stylish and functional addition to your outdoor space. The Cabinex™ Bar Fridge is powered by an LG Compressor, is designed for outdoor undercover use - IPX4 rated and features an adjustable digital thermostat. The triple glazed glass door retains cool temperature in the fridge and cuts down UV while the self closing heated door reduces condensation. With adjustable shelves, height adjustable feet and internal LED lights.



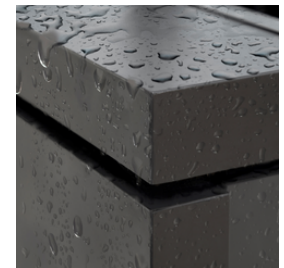
Adjustable feet

Adjustable feet on all cabinets mean that levelling your outdoor kitchen is simple and easy. With European patios having a fall for water drainage, these adjustable feet are imperative to levelling and perfecting your outdoor kitchen.



Materials

Cabinex™ have combined high quality materials expected by the chef in all of us. Clean surfaces that are nice to touch and resistant to all BBQ cooking methods that take place over the years of use. These finishes represent beauty and solidity with easy, fuss free cleaning and stunning lines and design.



Black Porcelain Bench Tops and Waterfall Ends

Resistant to scratching, virtually zero porosity and highly resistant to aggressive chemicals, high temperatures and UV rays.



Sink

Our Cabinex™ Matte Black single and double sinks are made from black stainless steel for a more robust finish and design. Featuring a convenient drainer and basket waste.



Mixer Tap

Our Cabinex™ Gooseneck Matte Black WELS rated Mixer Tap gives your outdoor kitchen a modern, contemporary look and feel. The outdoor kitchen mixer tap is designed for full hands, the long spout enables you to use your elbow if you need to move the spout out of the way. The 360° swivel function makes this an efficient tap for your outdoor kitchen.



AirFrame

For added safety, there is an integrated AirFrame included as part of the BBQ module. The Air Frame is a combination of non-combustible thermal board and a vented air gap which provides a heat proof shield between the BBQ and the cabinetry.



Aluminium Frame

The Cabinex™ aluminium framing system provides the structure of our outdoor kitchens. Technology and design are combined to offer a patented cabinetry system that is a pioneer in its class. PVC panels, combined with Cabinex™ patented aluminium components for a rigid and robust cabinetry solution. Making it almost 4 times easier to construct than traditional cabinetry.



EO KITCHENS



Forged from experience and passion, EO kitchens are created to bring the functional attributes and aesthetic qualities of a premium kitchen to the outdoor space.

Designed and made in the UK, EO kitchens are made from high-specification materials. Powder-coated stainless steel modular frameworks, Dekton ceramic worktops and composite Millboard frontals make it fit for purpose in the Irish climate.

A SOLID FRAMEWORK

The framework at the heart of the kitchen is a modular stainless-steel system which fits together with a simple precision. The powder coating is available in a choice of four colours, and stove-baked for a smooth, durable finish.

Worktops are supplied as standard on each separate module to enable an efficient installation, but the option is available for bespoke worktop fitting service to provide a seamless, bespoke finish to the end product.



PREMIUM MATERIALS TO CHOOSE FROM

FRONTALS AND PANELS

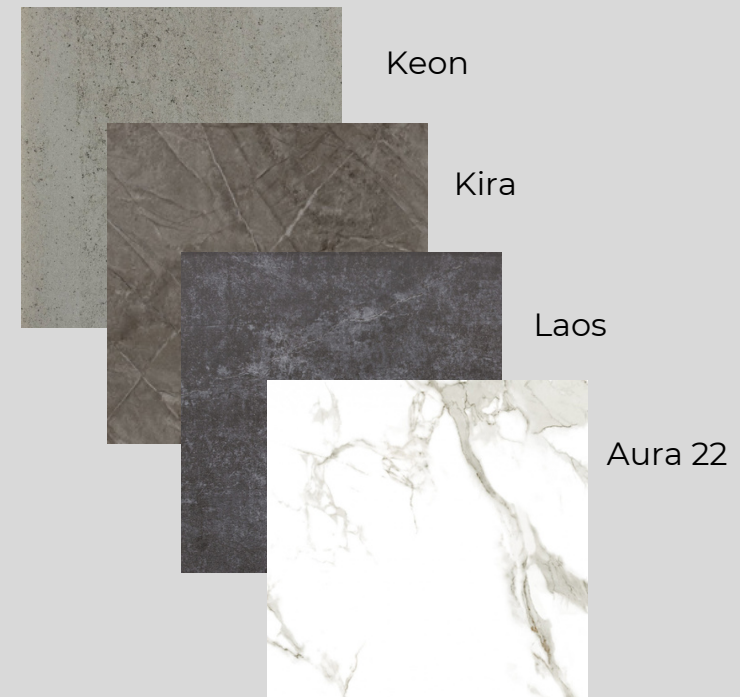
Millboard is a premium composite timber effect material, which we use for the frontals and panels of our kitchens.

Commonly used for decking and building cladding, we offer it in a range of seven different finishes. Moulded from real wood, it is guaranteed not to splinter, warp, rot or fade.



WORKTOPS

Our worktops are made from Dekton, the market leader in external porcelain ceramic material. It is incredibly durable, and offers a hygienic work surface which will resist stains, abrasions and every extreme of temperature. As standard we supply four finishes in natural tones, with other options available on request.

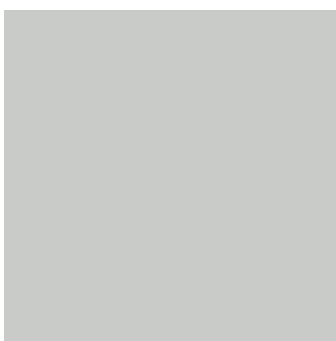


PREMIUM MATERIALS TO CHOOSE FROM

METALWORK FRAMES

This is not a product that will look tired in 2 years. 5 years or even 10 years. This is the real thing - a quality outdoor kitchen that is beautifully detailed and fit for purpose for the great outdoors.

All of the metalwork frames from EO Kitchens are fabricated from stainless steel with stainless steel adjustable feet.



RAL 7035
LIGHT GREY



RAL 7016
ANTHRACITE



RAL 7023
CONCRETE



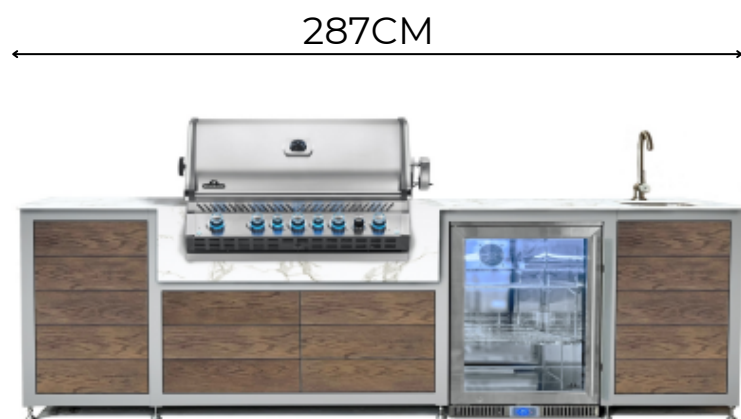
RAL 7021
BLACK GREY



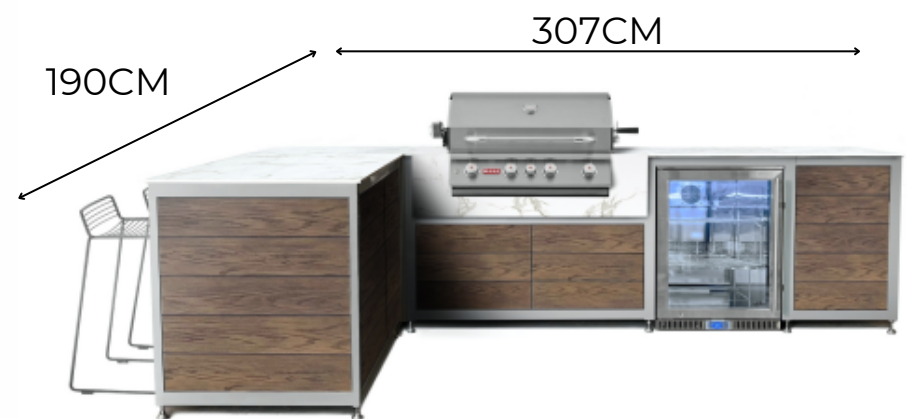
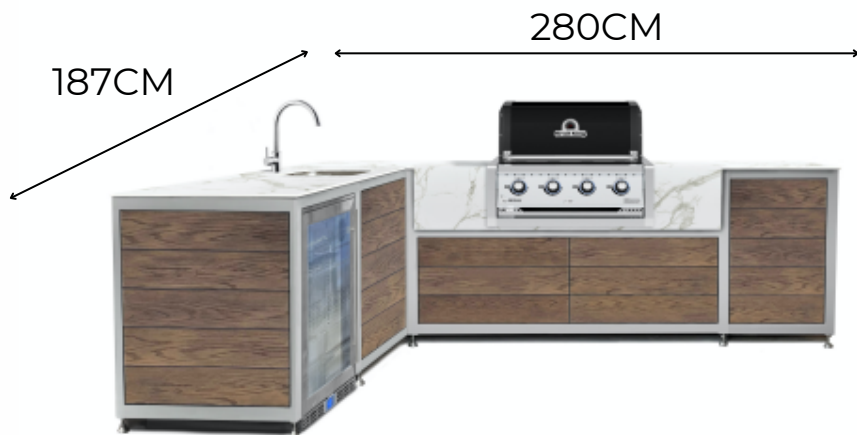
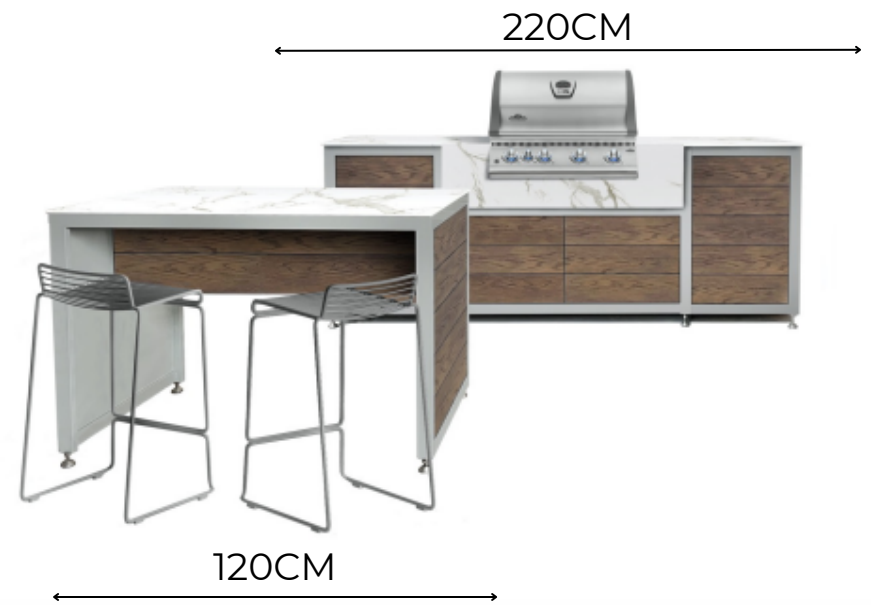
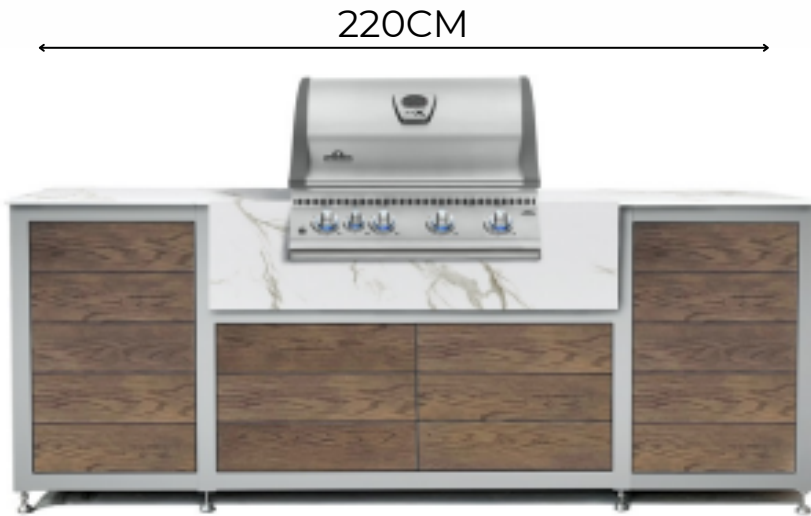
CONFIGURATION EXAMPLES

EO Kitchens have a wide range of layouts to suit your space and needs. In this brochure, we have outlined a few possible configurations for you.

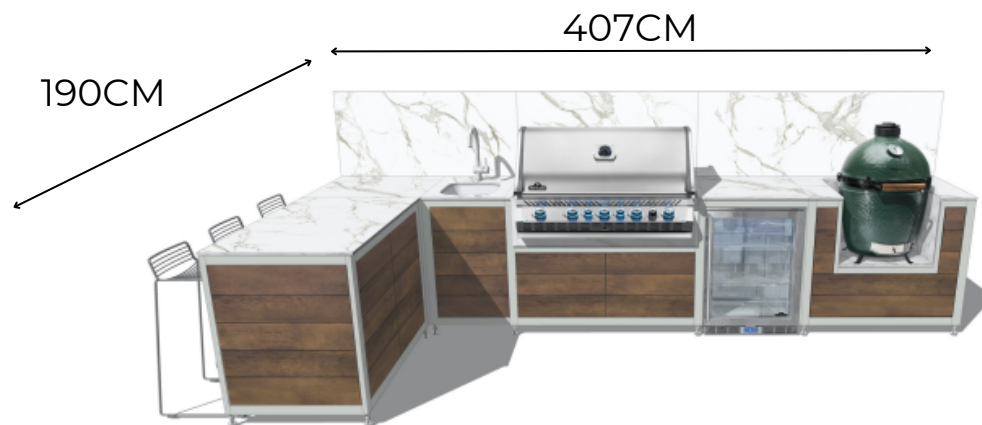
The modules standard worktop height is 934mm, adjustable between 894-974mm
Standard worktop depth is 705mm



CONFIGURATION EXAMPLES



CONFIGURATION EXAMPLES



SUGGESTED APPLIANCES FOR YOUR KITCHEN



Broil King BBQ
Regal 420
68cm



Broil King BBQ
Regal 520
92cm



Napoleon BBQ
BI-LEX-485
80cm



Napoleon BBQ
BI-LEX-605
97cm



Napoleon BBQ
BI PRO 500
80cm, c/w rotisserie



Napoleon BBQ
BI PRO 665
100cm, c/w rotisserie



Beefeater BBQ
Proline with hood
105cm, 6 burner



Beefeater BBQ
Proline with flat lid
105cm, 6 burner



Kamado Joe Classic III
Large ceramic egg
Cooking surface diameter 46cm
External diameter 57cm
Requires ceramic feet



Beefeater fridge
Outdoor fridge RHH
55cm



Napoleon fridge
Outdoor fridge LHH/RHH
60cm



THE OUTDOORSCENE™



THE OUTDOORSCENE™

BURNOUT LUX

BURN
OUT.



BURNOUT KITCHENS

Each and every Burnout.kitchen is defined by the same principle: The frames are made of sturdy stainless steel, the bodies, fronts, and countertops are made of an innovative composite material with laser-cut edges. But it doesn't end there. We use individually finished fittings that are approved for outdoor use and easy to move even when a blizzard is raging outside. You have the choice between adjustable feet and castors that are also available with brakes. Because flexibility is what makes our Burnout.kitchens so special. You can build it around a corner. Or long and straight. You can let them expand little by little or place them next to your existing grill. You can add benches and tables of the same material. Because it looks even fancier that way.

Made in Germany

As far as grills go, you have the choice: We can integrate the current models of Broil King and Napoleon into our Burnout.kitchen. A Kamado Joe can also be perfectly placed in our furniture. All modules and components are manufactured by us in East Westphalia, the cradle of the kitchen industry. Burnout.kitchen hails from Germany. Because we have been building furniture right here for decades. And know what that means for the product.



WHAT YOU GET WITH A BURNOUT KITCHEN



MODULAR

Do you like twists and turns? Or are you the straightforward type? Configure your kitchen as you need it, the way you can and want to place it. You want to expand? Go ahead. Everything can be expanded and modified.

SUSTAINABLE

That's what everybody wants to be today. We only use PVC-free materials. And built kitchens that last for decades.



WHAT YOU GET WITH A BURNOUT KITCHEN

EXPANDABLE

You already have a great grill?

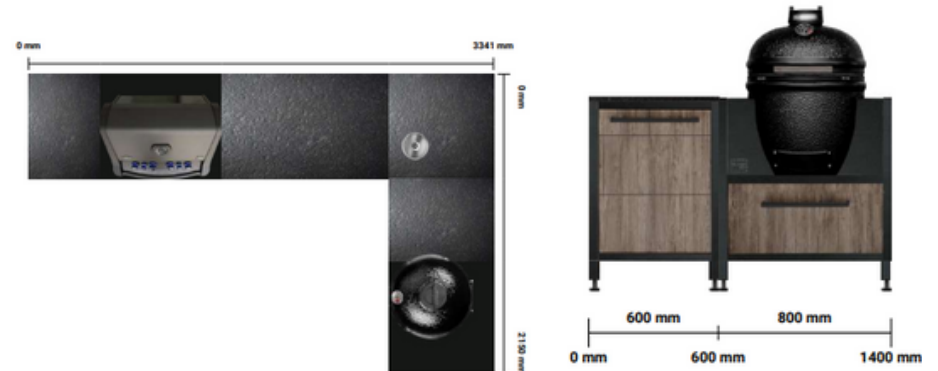
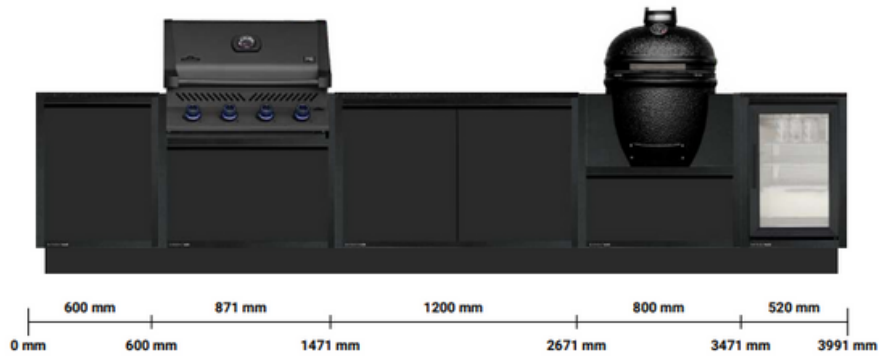
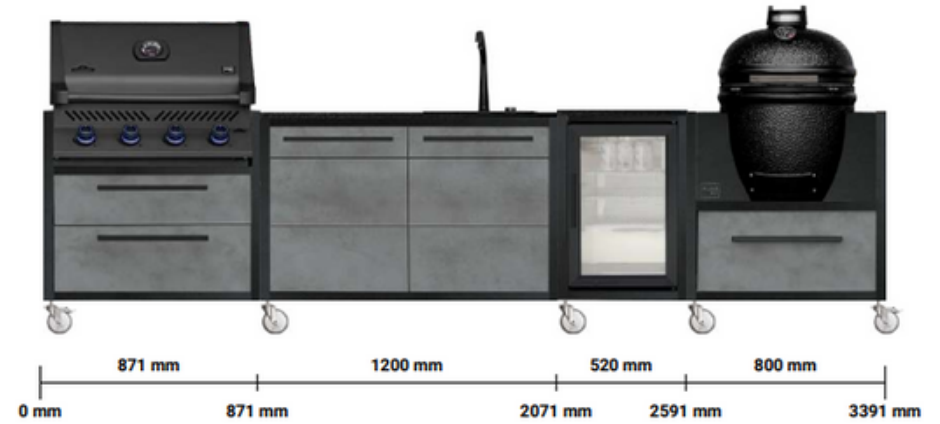
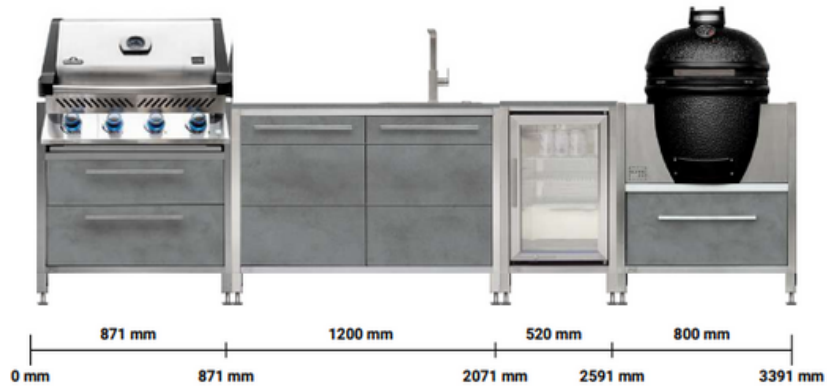
Congratulations. But do you have enough storage and working space? Our kitchen can be easily placed next to your grill, extending your action radius. You can see it. You can taste it.

COMPATIBLE.

You only swear by a certain grill manufacturer? Only entrust your sausages to another manufacturer's grill? Grill with whoever you like. Our kitchens are compatible with all grill manufacturers. And designed in such a way that the grill and the furniture are not permanently connected. In case you reconsider your love of that certain manufacturer.

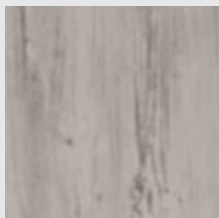


CONFIGURATION EXAMPLES

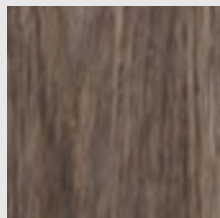


BURNOUT KITCHEN MATERIALS

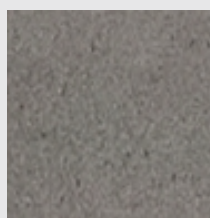
CABINETS



Oak

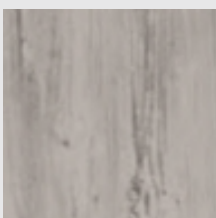
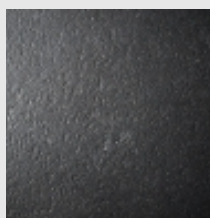


Dark Oak



Smoke

COUNTER TOP

Oak
Composite MaterialStone
Natural Stone

FRAME COLOUR



Brushed Stainless Steel



Silverline



Stainless Steel Black



Notes

Find Us Here

Goatstown Cross, Goatstown, Dublin 14

01 2960212

sales@outdoor.ie

www.outdoor.ie